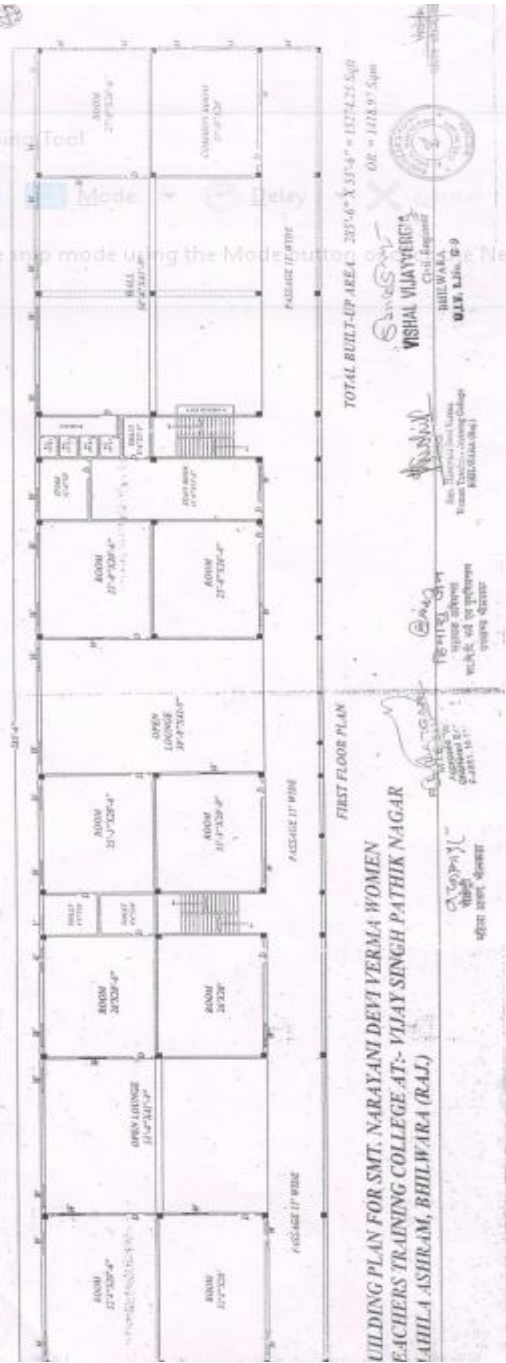


Snipping Tool
New Mode Delay
Select the crop mode using the Mode button on the New button.



TOTAL BUILT-UP AREA: 285.67 X 35.47' = 10124.23 Sqm
OR = 1118.97 Sqm

**BUILDING PLAN FOR SMT. NARAYANI DEVI VERMA WOMEN
TEACHERS TRAINING COLLEGE AT- VIJAY SINGH PATHIK NAGAR
LAHILA ASIRAM, BHILWARA (R.A.J.)**



VISHAL VIJAYVERGIYA
Civil Engineer
BHILWARA, U.P. No. 29

Sanjay
Sanjay
Sanjay

Sanjay
Sanjay
Sanjay

Sanjay
Sanjay
Sanjay

Sanjay
Sanjay
Sanjay

Sanjay
Sanjay
Sanjay

Sanjay
Sanjay
Sanjay

Sanjay
Sanjay
Sanjay

नवीन शिक्षक मासिक मजगतीसुवा मजगतीसुवा मजगतीसुवा

U.T.L. No. - C-5
BILWARA
EVAISHAL VIJAYVERGI
C.A. BHANU



श्रीमती नायडुवा देवी देवी

श्रीमती देवी देवी
श्रीमती देवी देवी
श्रीमती देवी देवी

M. U. OARDA
M.T.E. S.V.
Approved Value
10,000/-

TOTAL BUILDING AREA = 2700 Sqft
GROUND FLOOR PLAN



01/1/77